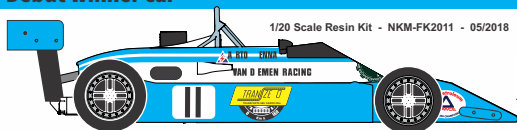


# Model FF2000 RF82

Debut winner car



1/20 Scale Resin Kit - NKM-FK2011 - 05/2018

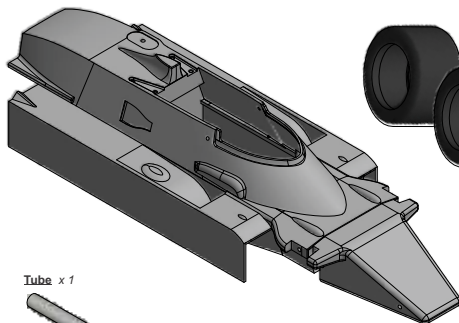


## Read before assembly

- \* Read carefully and fully understand the instructions before assembly.
- \* Use polyester putty, for remodelling and repair of resin body and parts.
- \* Keep away from small children.
- \* Cement and paints not included in the kit.
- \* Model car for collectors. Not suitable for modellers under 14 years old.
- \* **Tools required:** cement, plastic scribe, side cutter, tweezers and modelling knife.
- \* Use ciano-acrilate cement only.

### Resin parts x 1

### Tyres rubber x 4



### Vaccum forming x1



### Tube x 1



### SPRINGS steel x 4

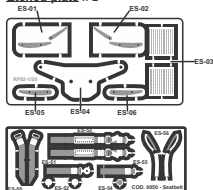
### WIRE 0,8mm



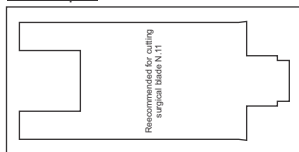
### SCREW steel x10



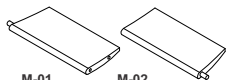
### Etched plate x 2



### Aluminum plate x 1



## Metal Parts



M-01

M-02



M-03



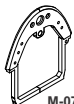
M-04



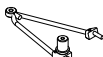
M-05



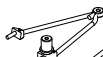
M-06



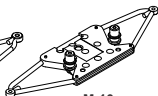
M-07



M-08



M-09



M-10



M-11



M-12



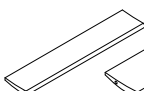
M-13



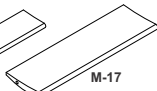
M-14



M-15



M-16



M-17



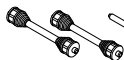
M-18



M-19



M-20



M-21



M-22



M-23



M-24



M-25



M-26



M-27



M-28



M-29



M-30



M-31



M-32



M-33



M-34



M-35



M-36

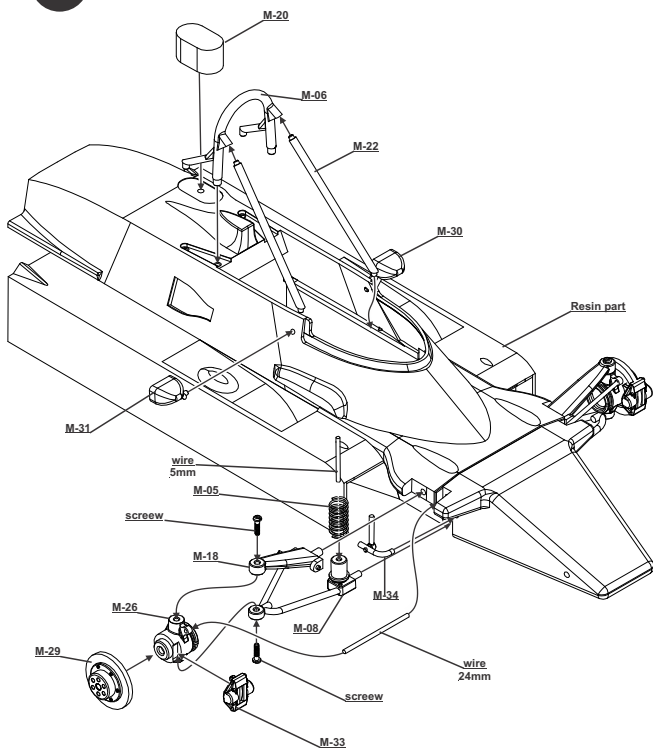


M-37



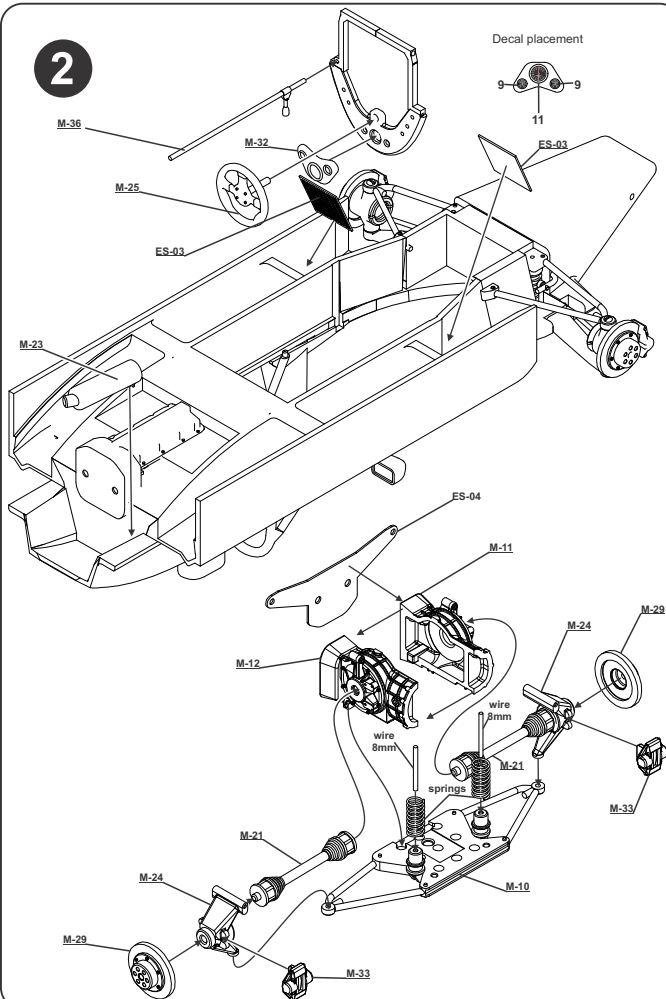
M-38

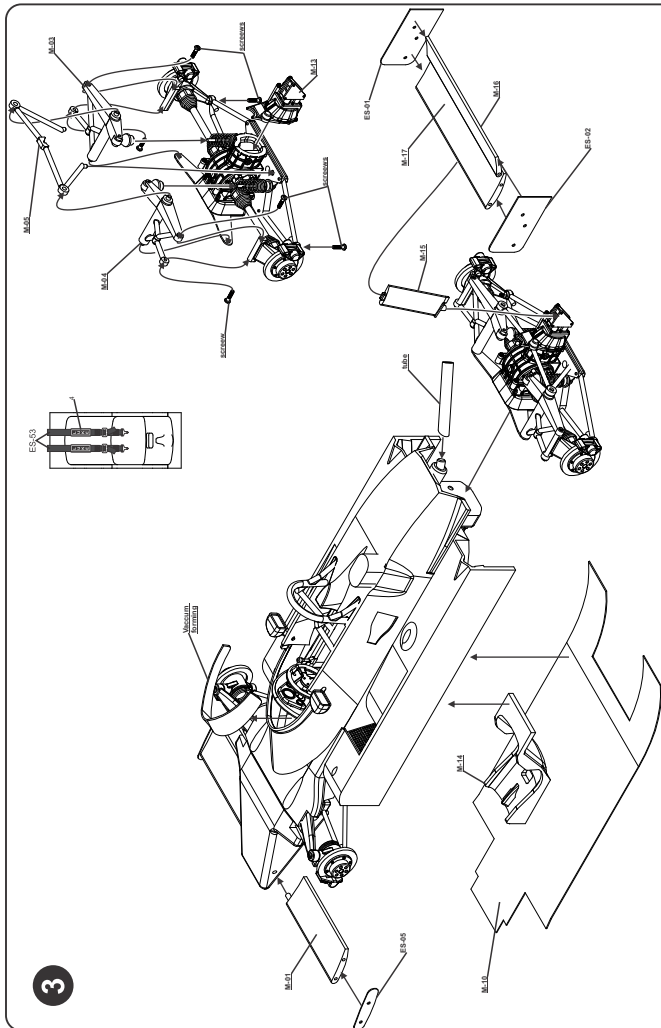
1



# 2

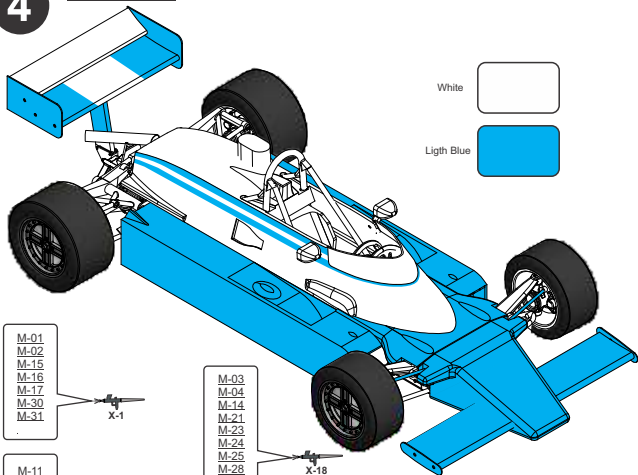
Decal placement





4

## PAINT GUIDE



M-01  
M-02  
M-15  
M-16  
M-17  
M-30  
M-31

X-1

M-11  
M-12  
M-13  
M-29

X-10

M-08  
M-09  
M-10  
M-18  
M-19  
M-26  
M-27  
M-34  
M-35  
M-36  
M-37  
M-38

X-11

M-33

X-12

M-03  
M-04  
M-14  
M-21  
M-23  
M-24  
M-25  
M-28  
M-32  
M-37  
M-38

X-18

M-05  
M-06  
M-07

XF-23

M-20

XF-1

  
**Neko**  
Models Neko

## Decal placement

